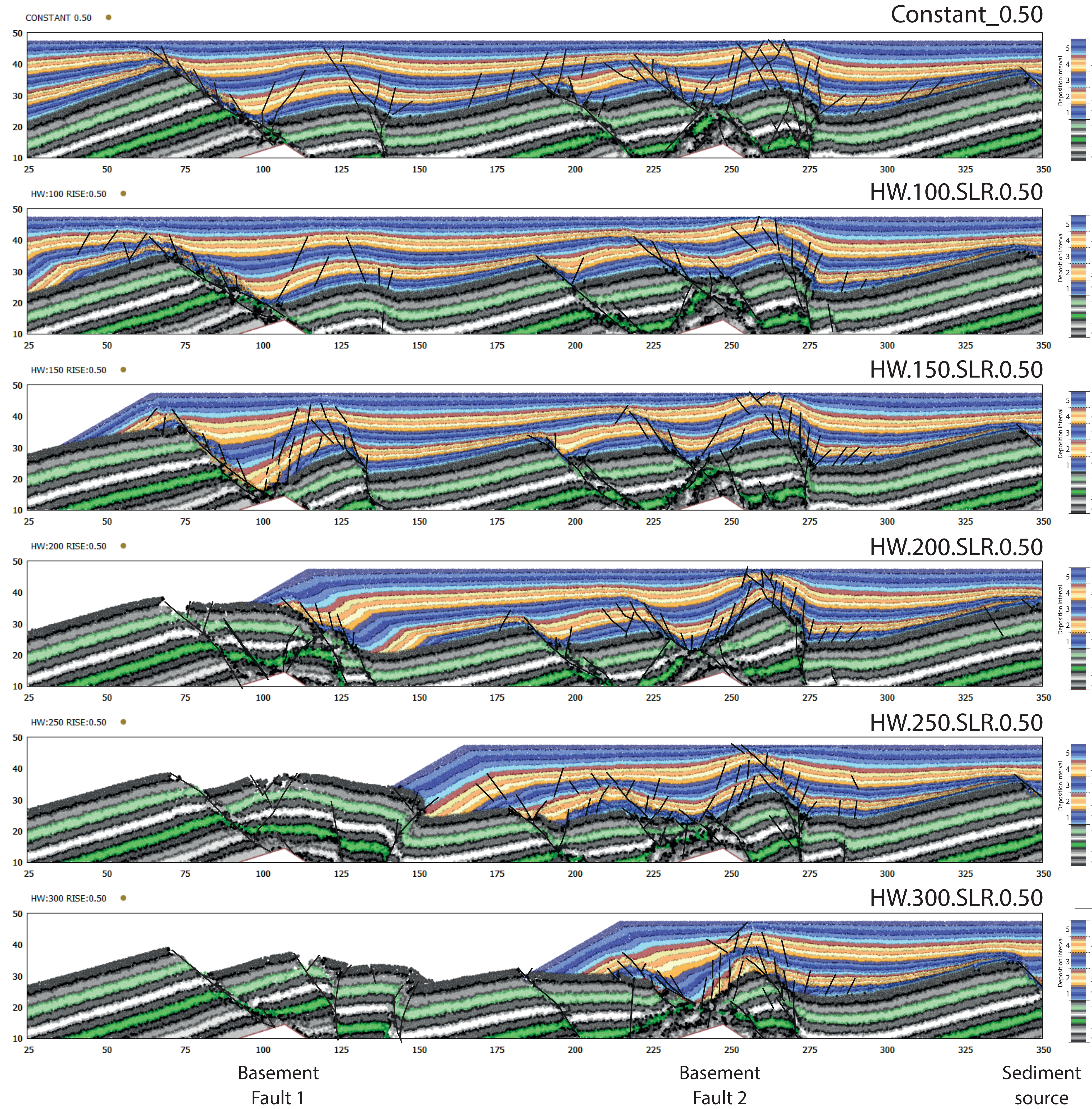


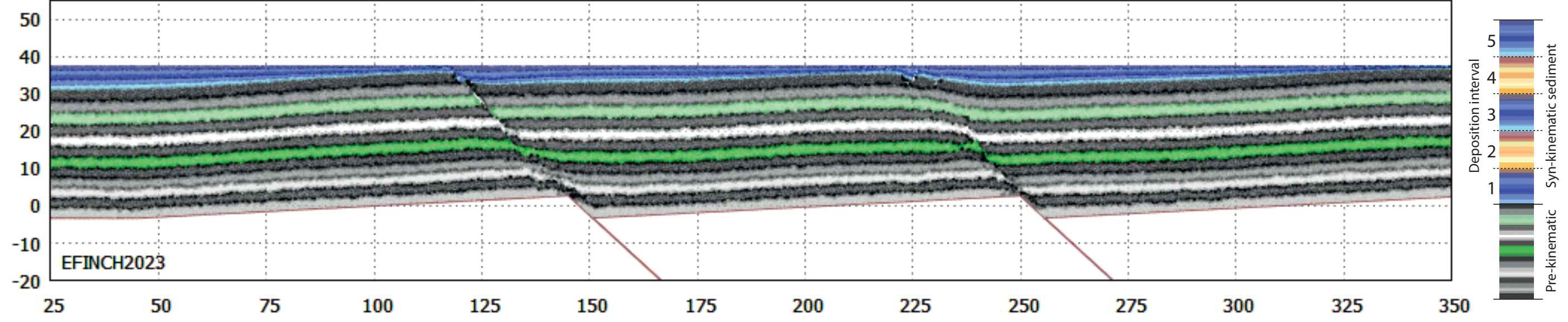
Below is a reminder of interpretation of the final fault geometries with hangingwall derived deltas where sediment is coloured relative to 25 layers of fill (0.25 unit/fill) shown in **Figure 5** of document **HW.deltas.introduction.pdf**. The sediment source is in the hangingwall of the right-hand basement fault (2). Nomenclature indicates the initial location of the delta front in units (eg. HW.100.SLR.0.50 had it's first fill with the delta front at **100** units) which increase in steps of 50 units. An experiment with a constant fill and no delta is shown for comparison (Constant_0.50).

This pdf document provides uninterpreted sections at the end of the five intervals of sedimentation for each experiment.

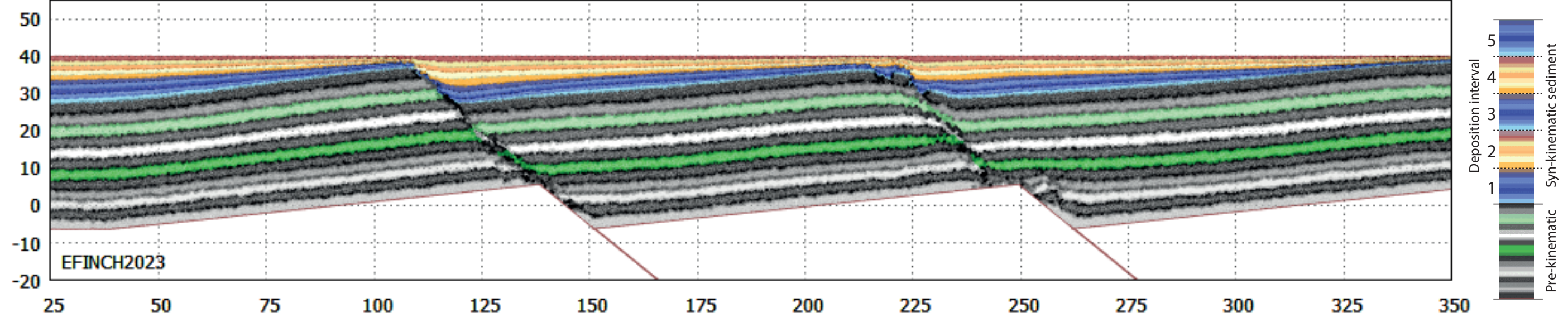


Experiment: Constant_0.50

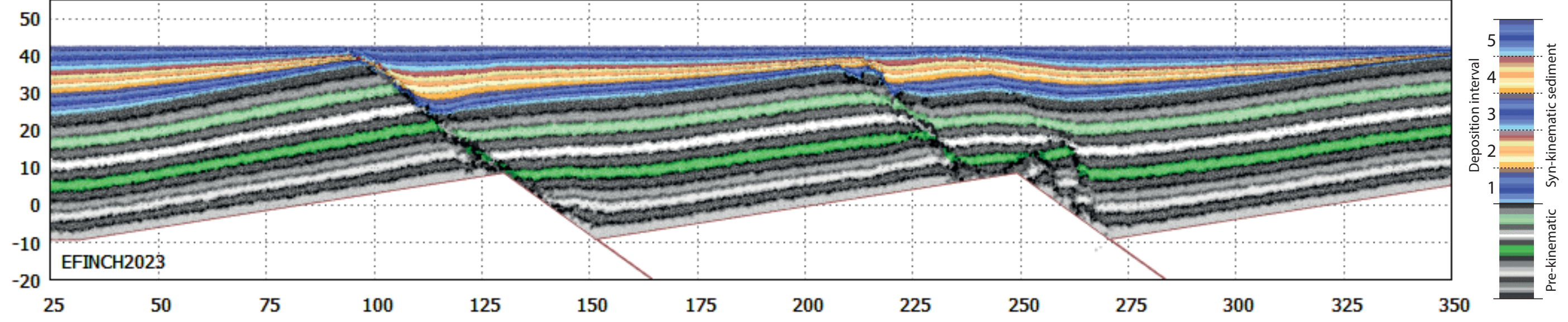
Time: 15 Interval: 1 SLR: 0.50



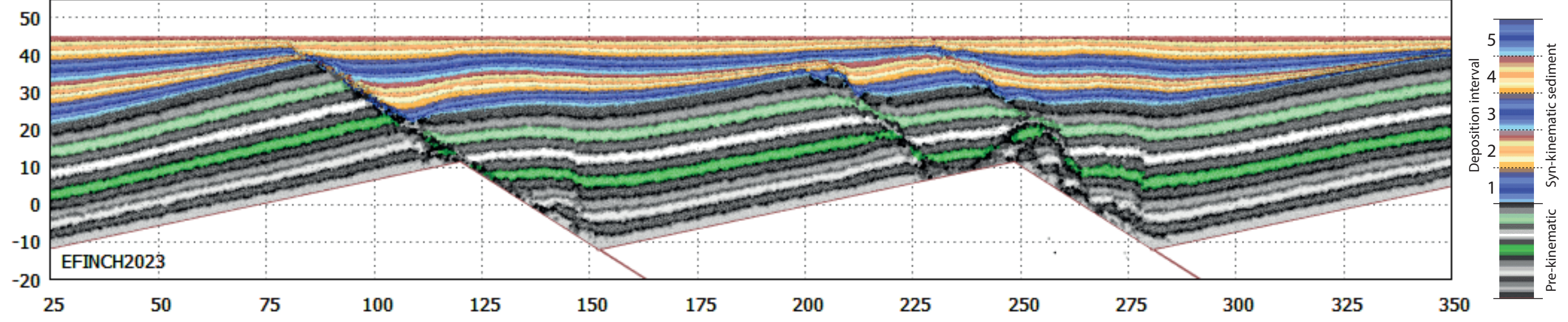
Time: 30 Interval: 2 SLR: 0.50



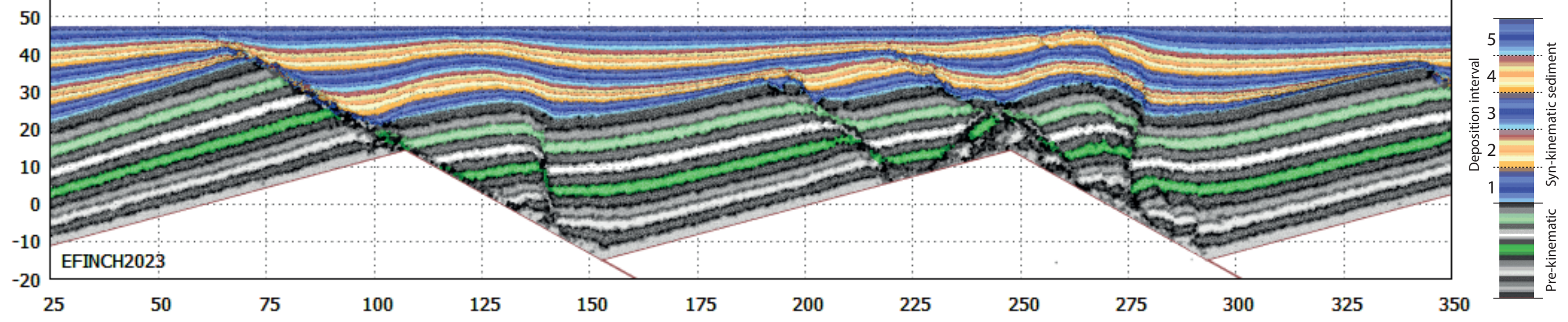
Time: 45 Interval: 3 SLR: 0.50



Time: 60 Interval: 4 SLR: 0.50

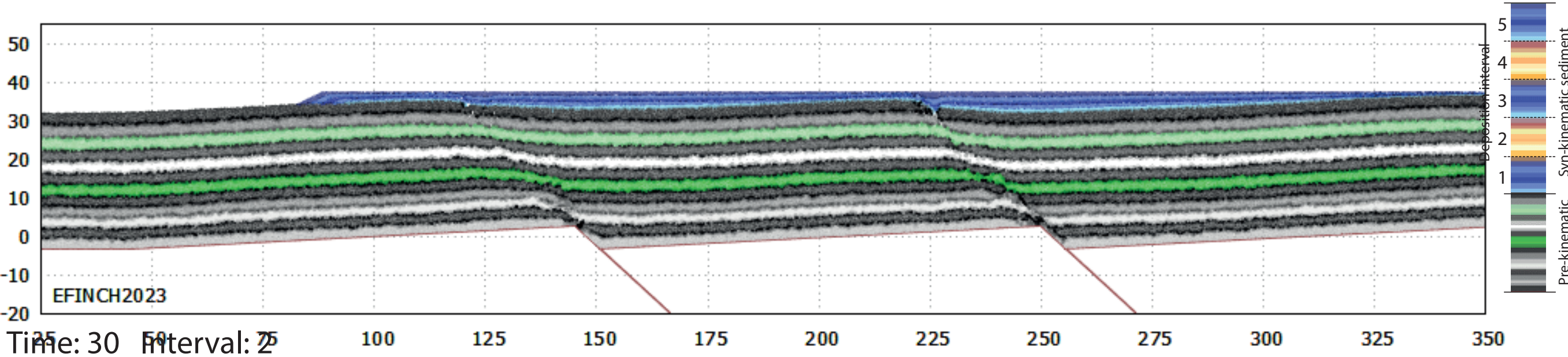


Time: 75 Interval: 5 SLR: 0.50

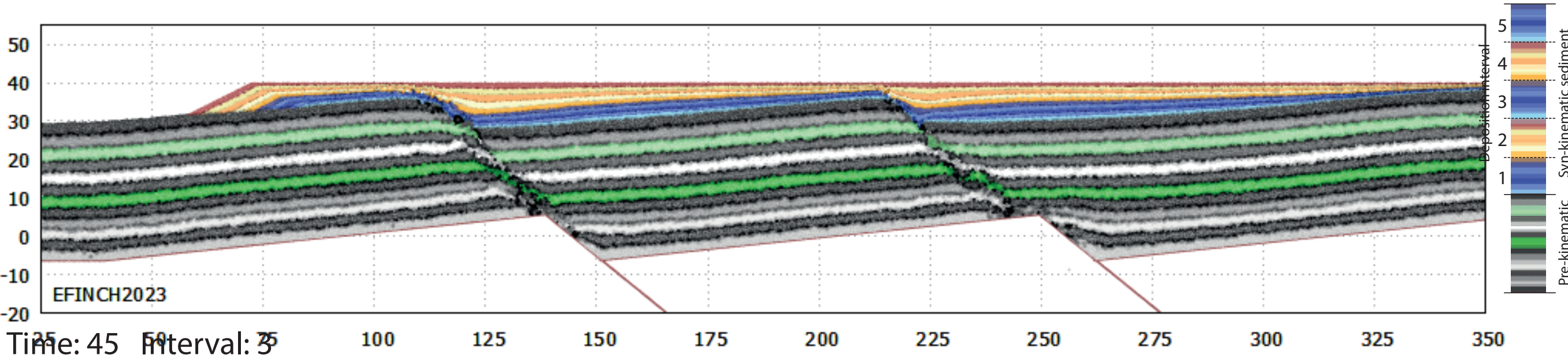


Experiment: FW.100.SLR.0.50

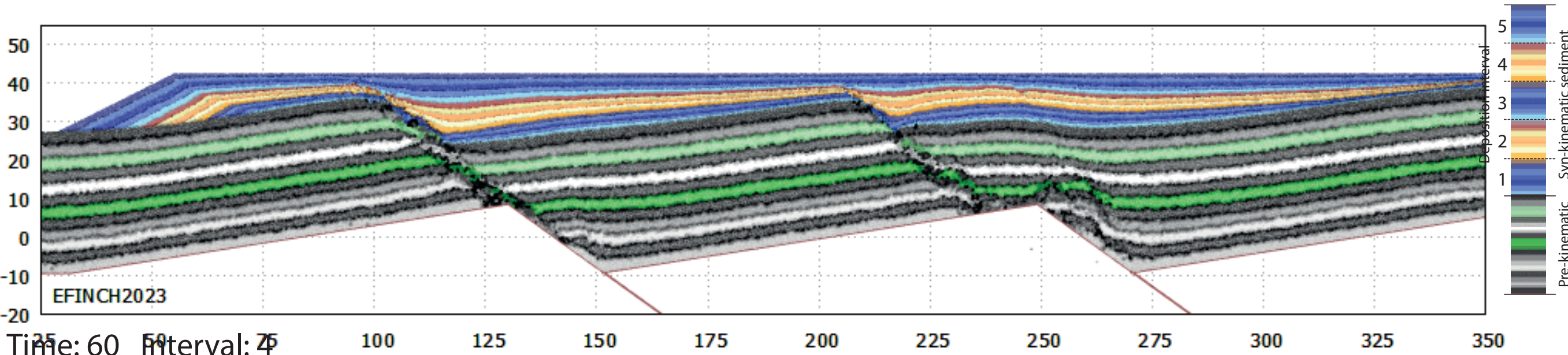
Time: 15 Interval: 1



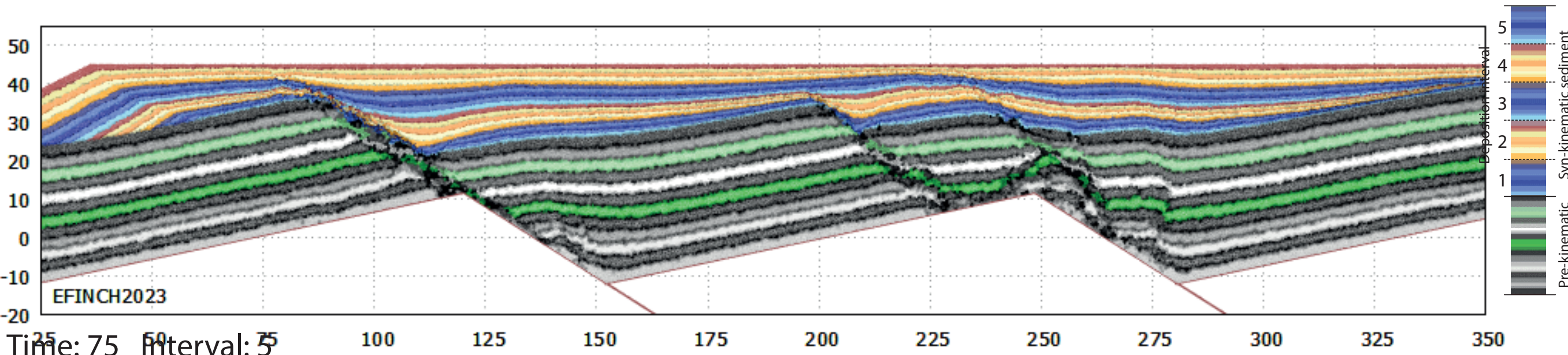
Time: 30 Interval: 2



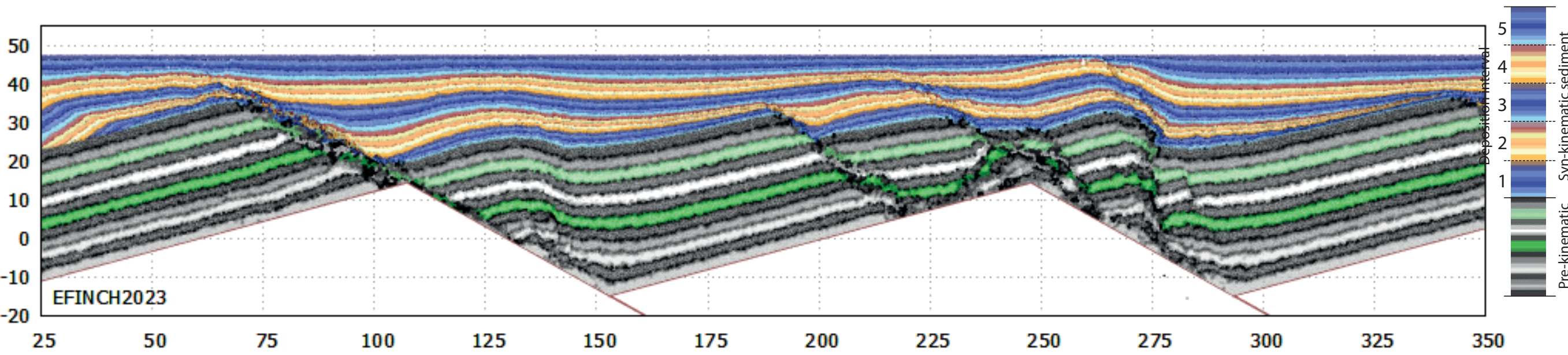
Time: 45 Interval: 3



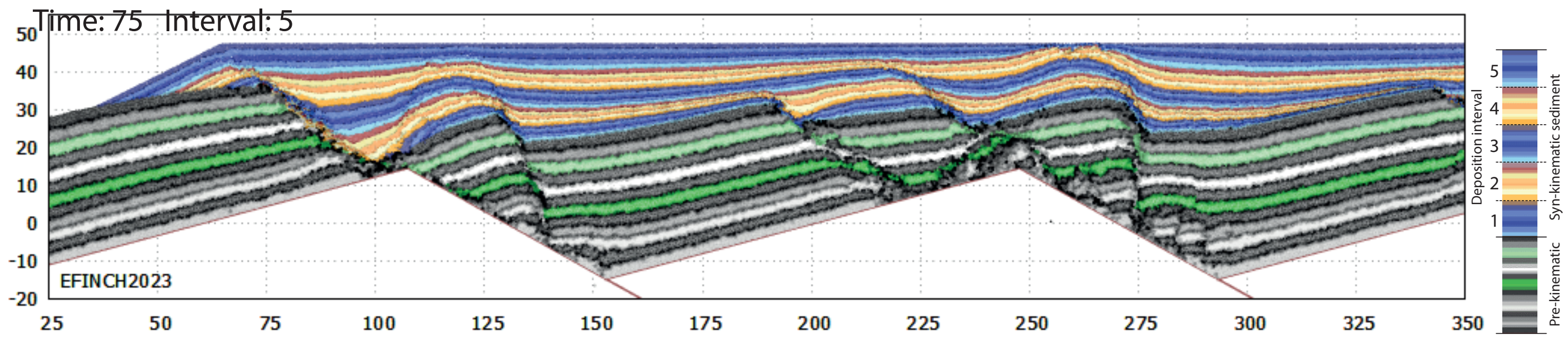
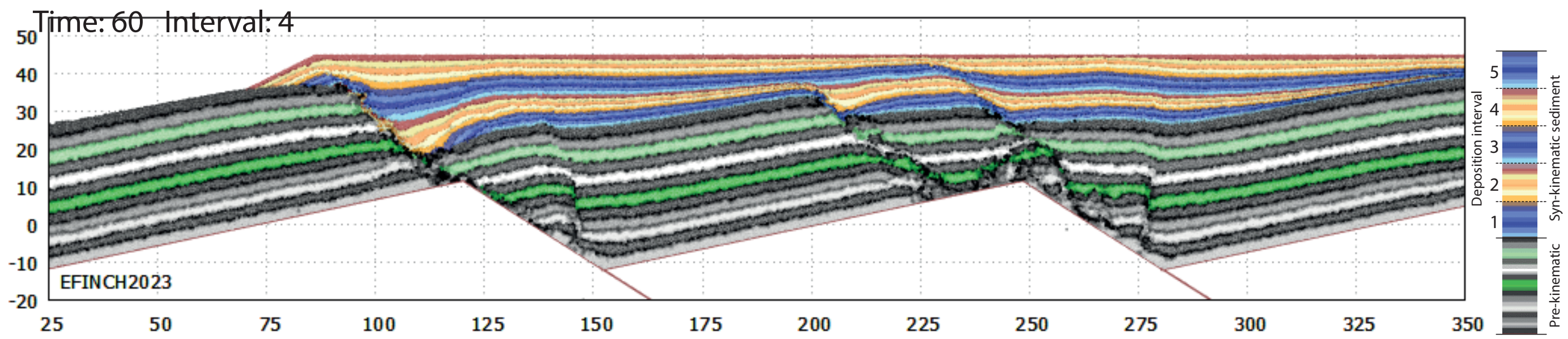
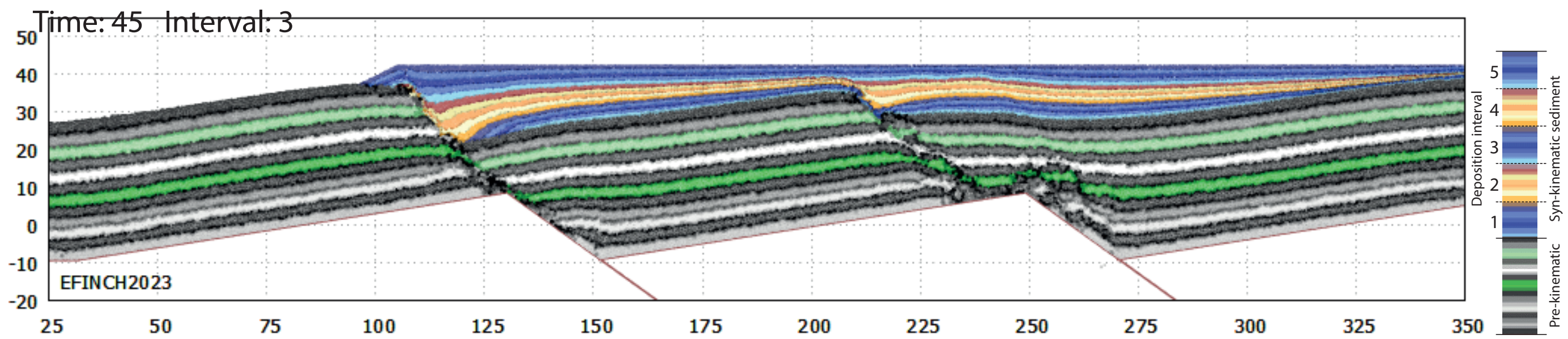
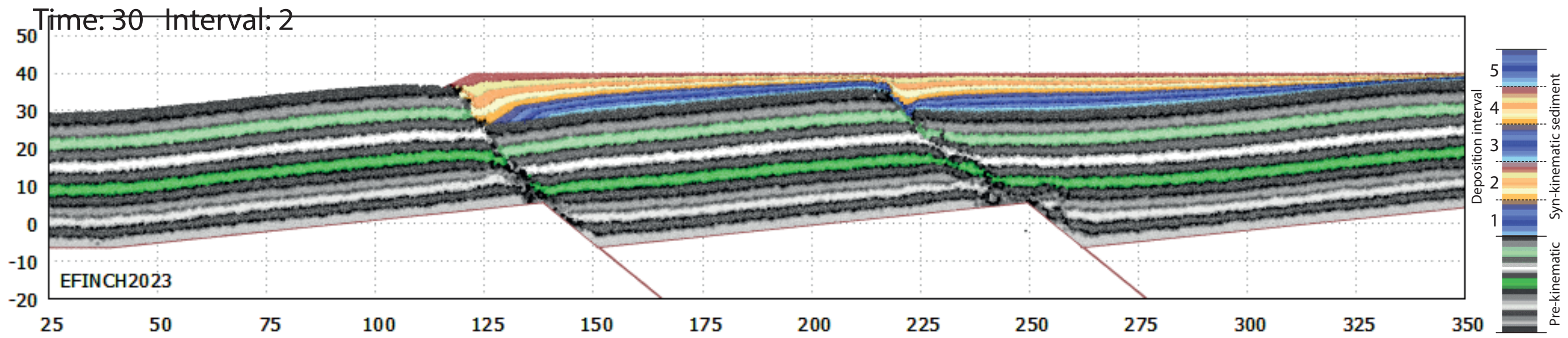
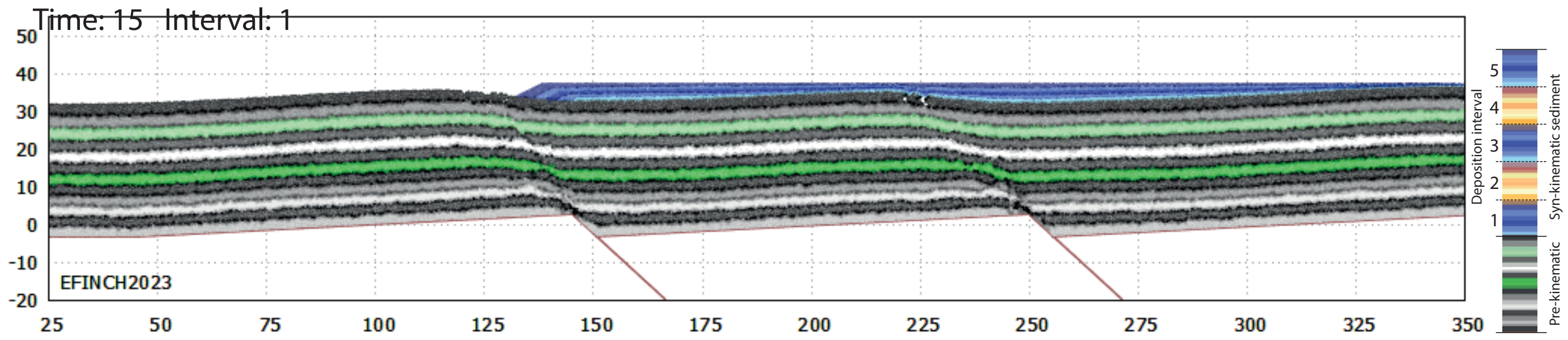
Time: 60 Interval: 4



Time: 75 Interval: 5

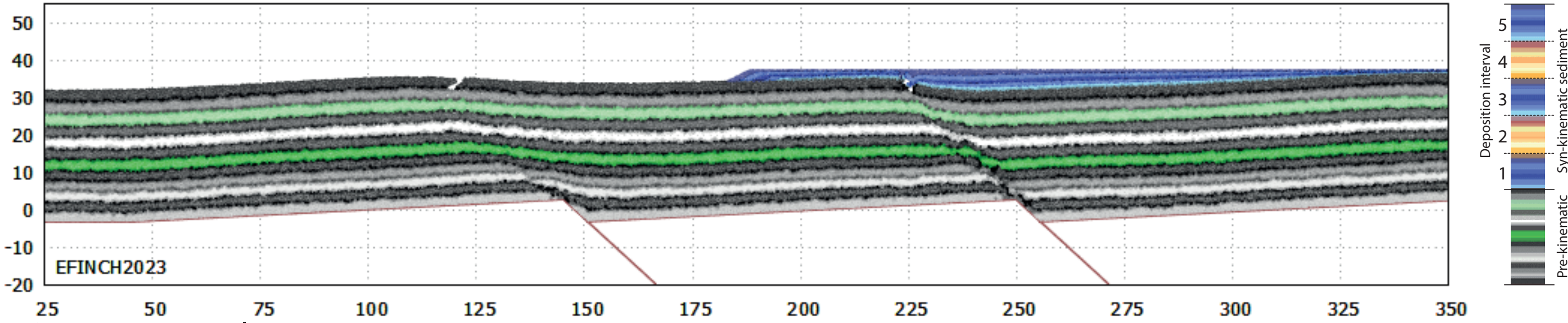


Experiment: FW.150.SLR.0.50

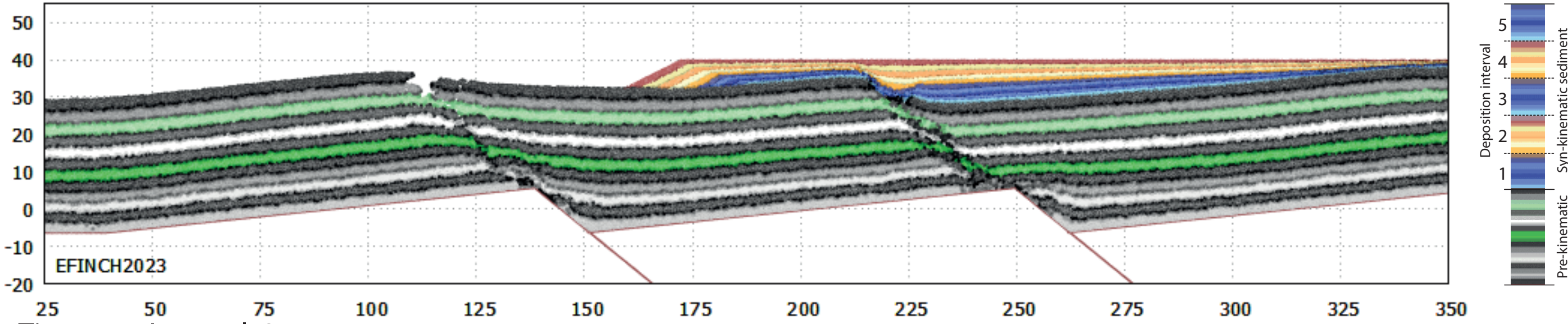


Experiment: FW.200.SLR.0.50

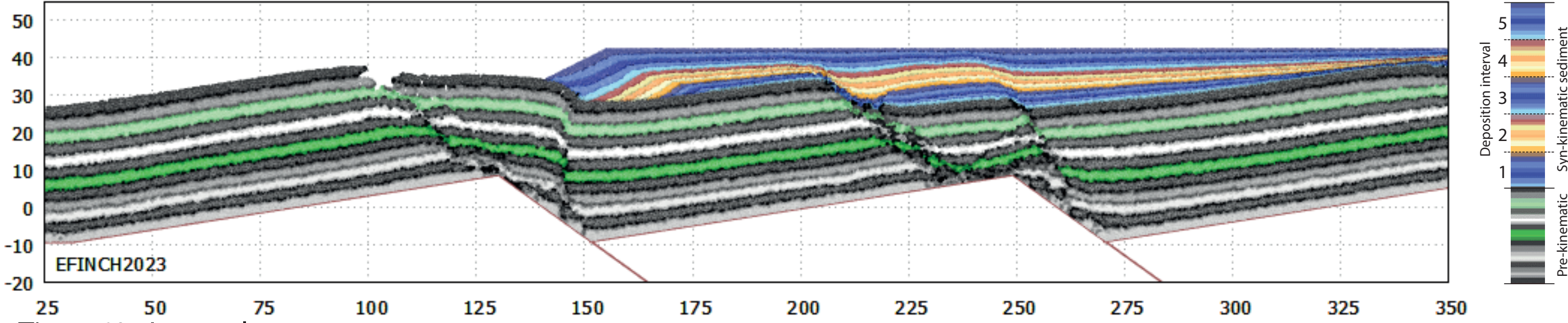
Time: 15 Interval: 1



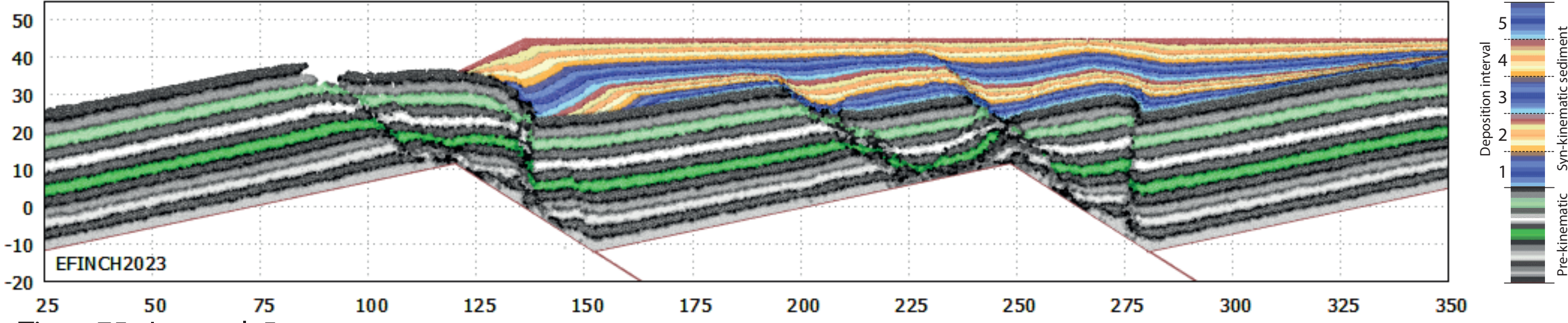
Time: 30 Interval: 2



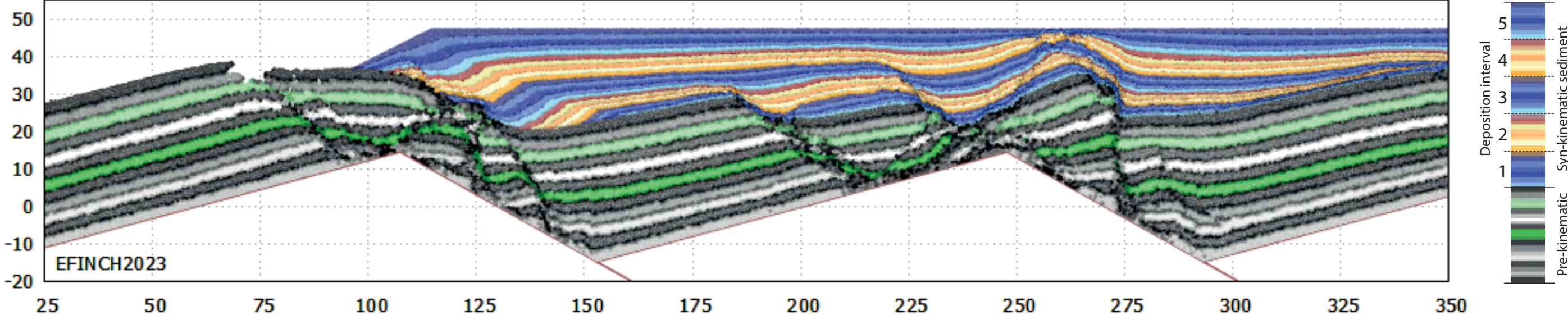
Time: 45 Interval: 3



Time: 60 Interval: 4

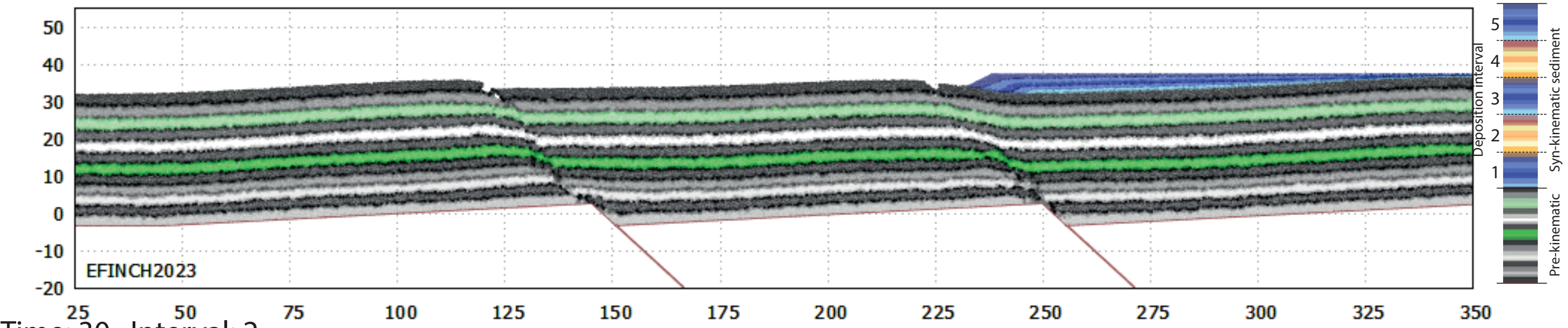


Time: 75 Interval: 5

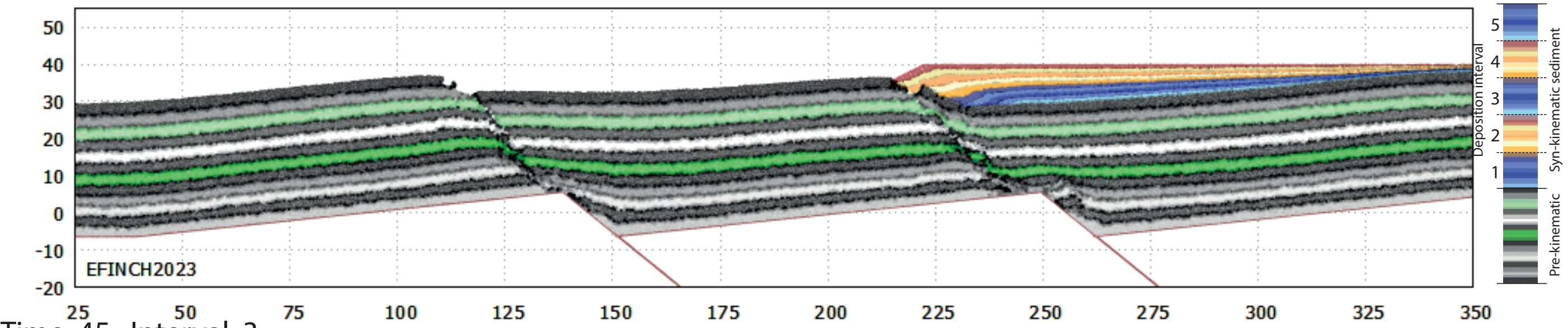


Experiment: FW.250.SLR.0.50

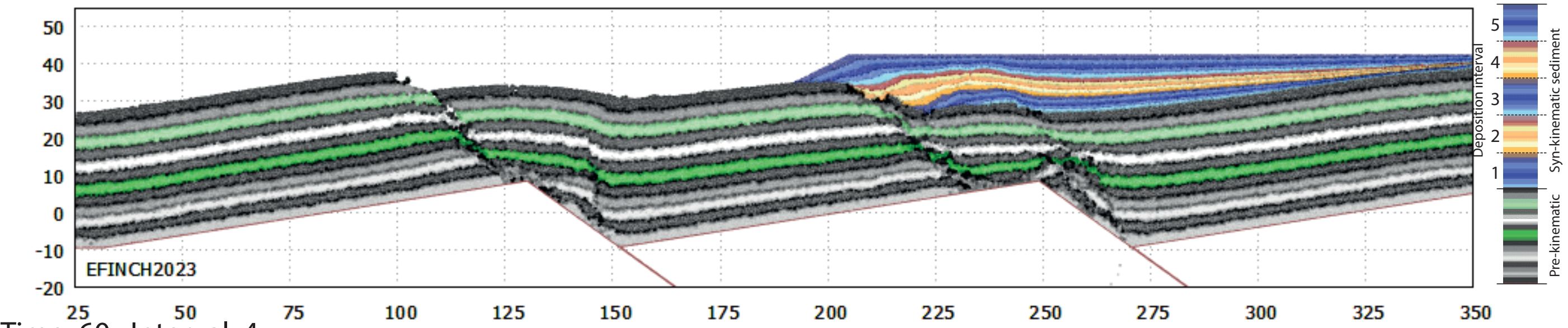
Time: 15 Interval: 1



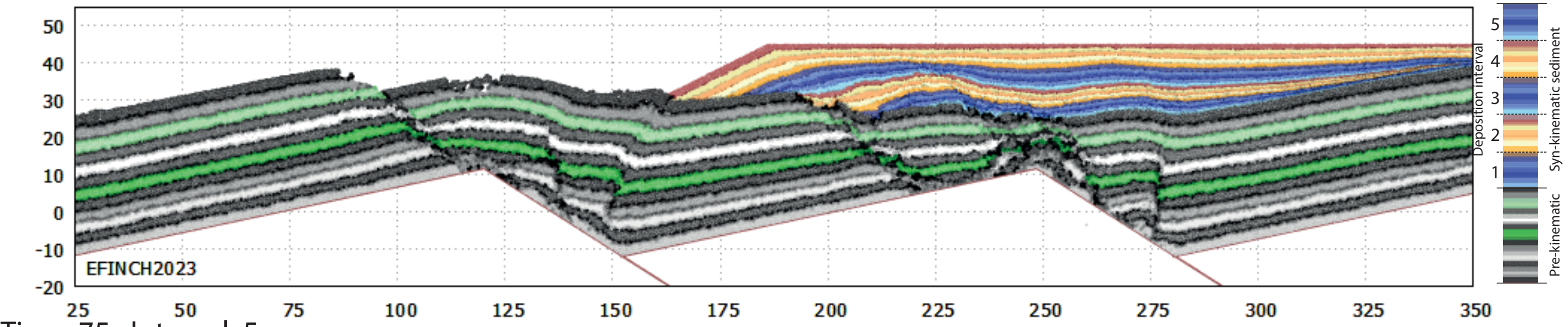
Time: 30 Interval: 2



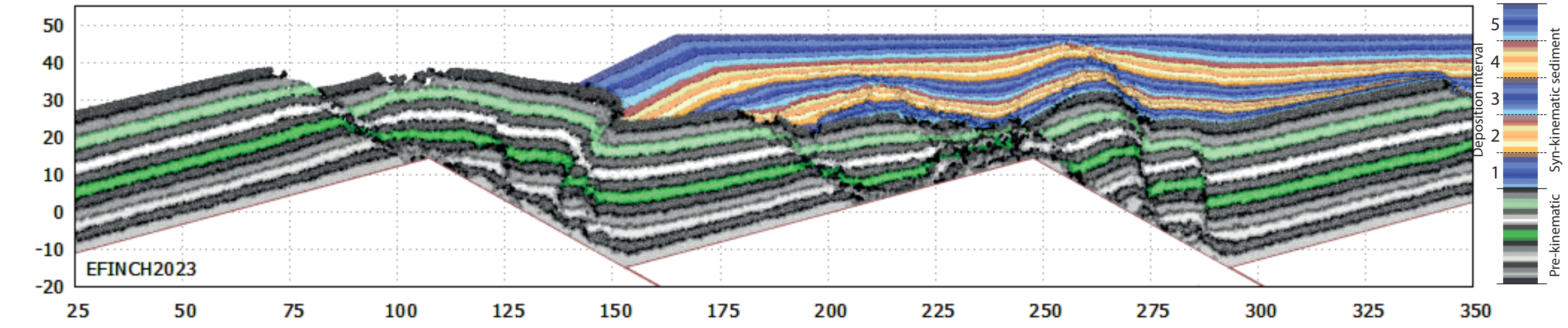
Time: 45 Interval: 3



Time: 60 Interval: 4

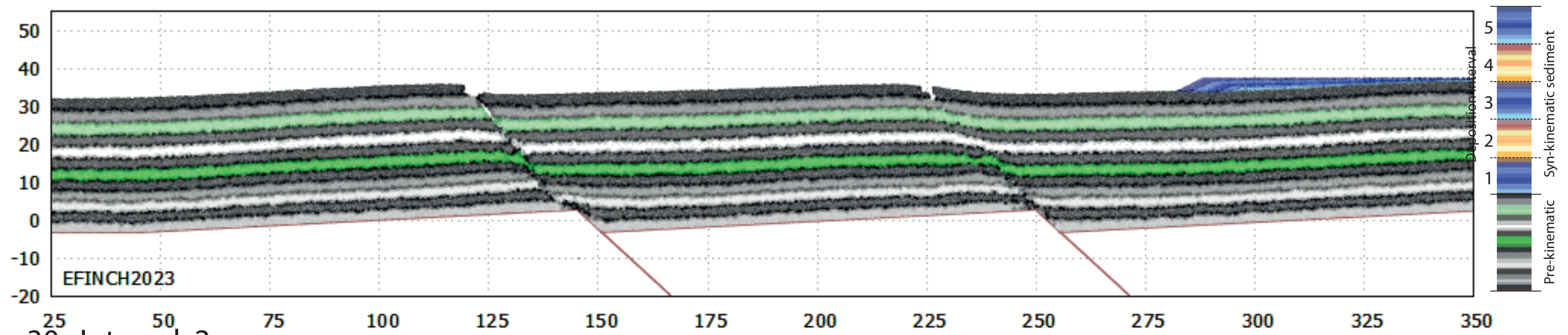


Time: 75 Interval: 5

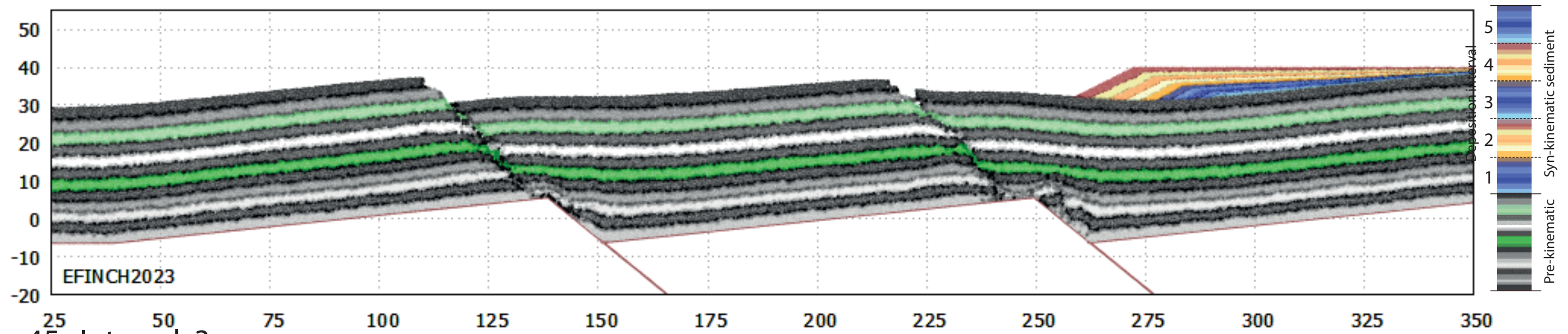


Experiment: FW.300.SLR.0.50

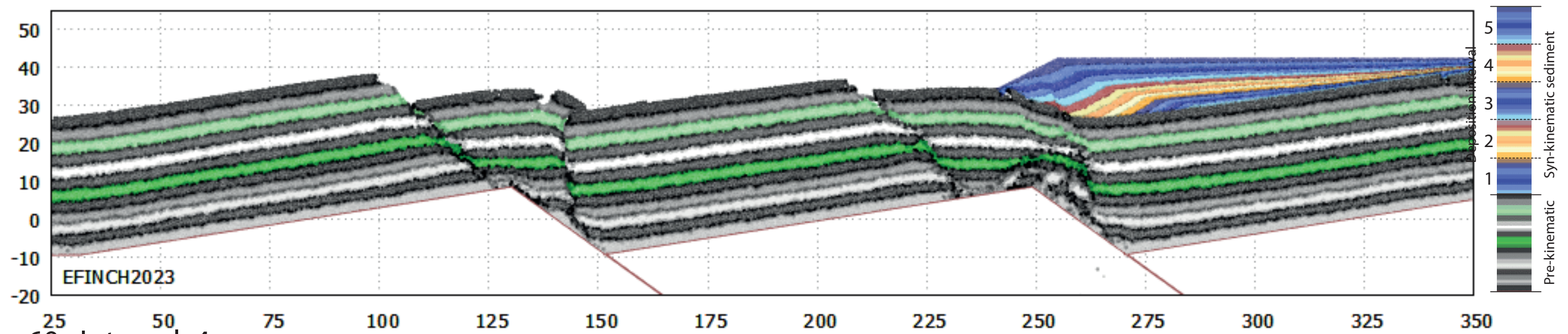
Time: 15 Interval: 1



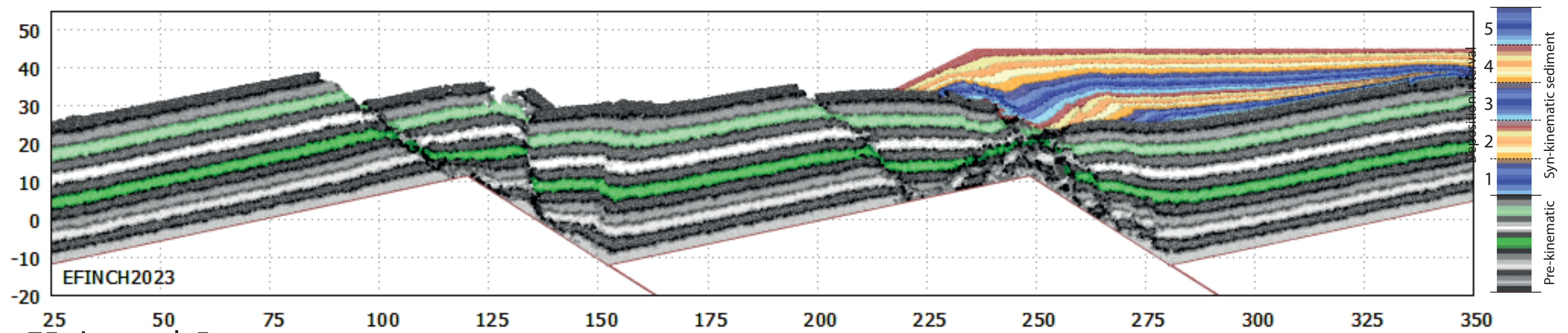
Time: 30 Interval: 2



Time: 45 Interval: 3



Time: 60 Interval: 4



Time: 75 Interval: 5

